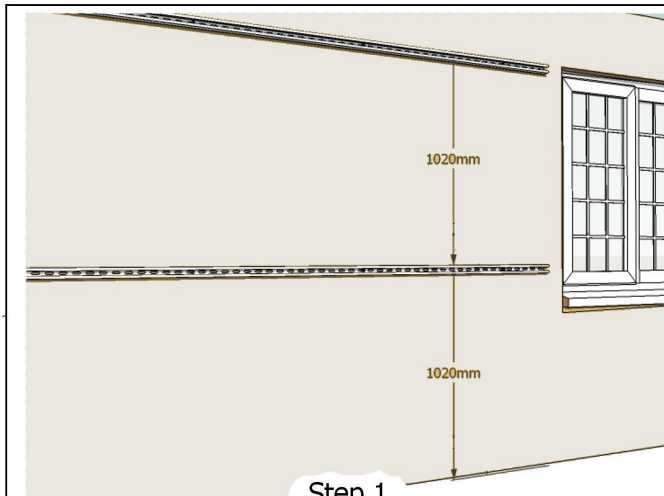


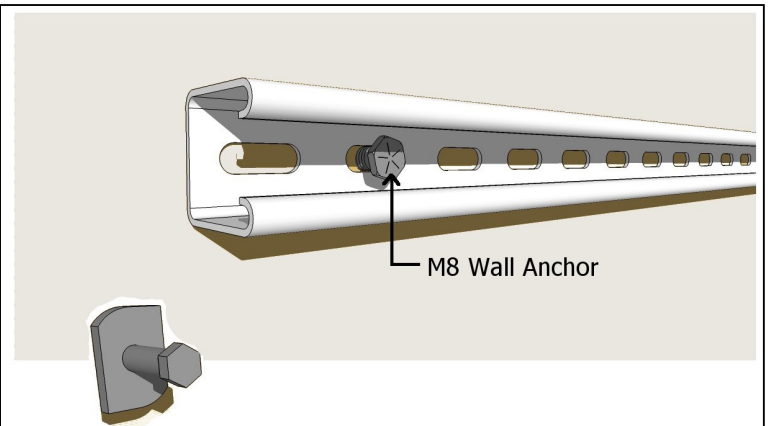
# Easiwall-Pro

## Fixing Instructions



Step 1

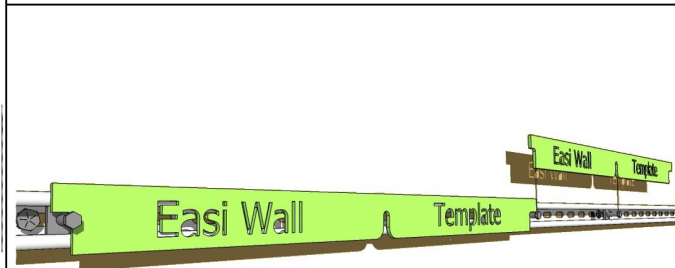
Space Uni-strut rails horizontally at 1020crs as indicated above. (These setout dimensions will start your first row on the ground)



M8 Zebedee fixing

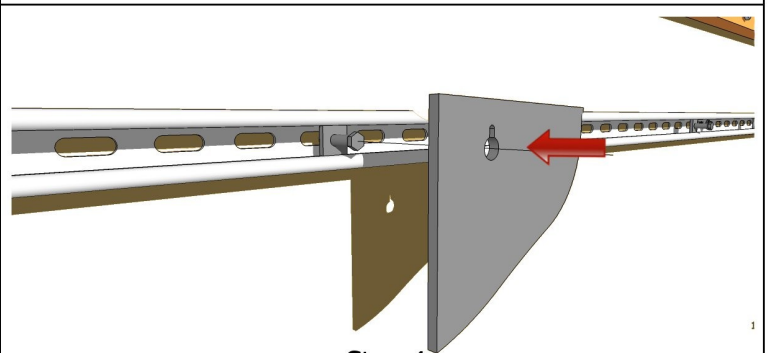
Step 2

Bolt Uni-struts to wall with M8 wall anchors/Coach screws at 800mm max crs. Zebedee fixings can now be slotted into Uni-strut rails by twisting clockwise into locked position.



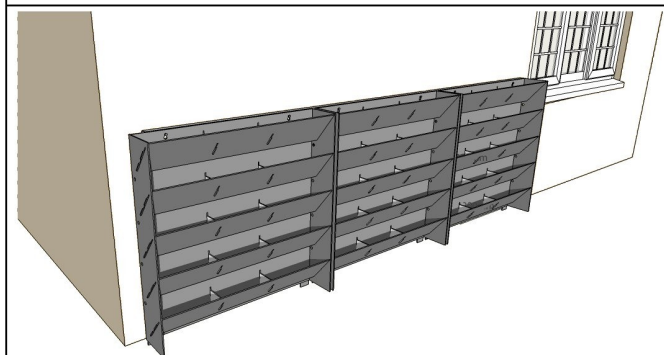
Step 3

Use the included Easiwall fixing setout template to accurately position Zebedee fixings. The template has 3 bolt locator positions. End-to-end spacing suits panel fixing locations, End-to-centre spacing suits the spacing between panels.



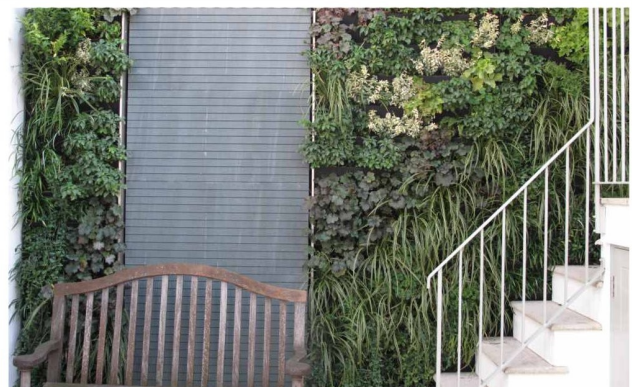
Step 4

The assembled Easiwall-Pro units can now be attached. The Zebedee locations will accurately coincide with the keyed locator slots on the back of the panels. Once the Easiwall-Pro's are clipped on, tighten Zebedee bolts to fasten securely



Step 5

Repeat step 4 with each panel, working horizontally to form a row of Easiwall-Pro panels, then repeat on higher levels working your way up to complete your green wall.



Step 6

The Easiwall is now ready to be planted. Fill each trough with 40mm free-draining material before filling with selected planting substrate and plants

## Urban greening solutions

Treebox Ltd, Penten Estates, 288 Haydon's Road, London SW19 8JZ

Email: [info@treebox.co.uk](mailto:info@treebox.co.uk) Web: [www.treebox.co.uk](http://www.treebox.co.uk)

Feb 2012